

1. Open Photoshop.



2. Open desired image

3. Go to Channel Palette and Create New Channel. Fill the channel with white color.

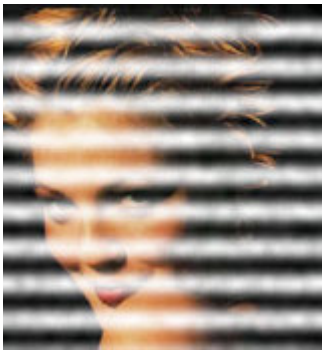
4. Filter > Noise > Add Noise (Gaussian, Monochromatic, Amount : 25)

5. Filter > Sketch > Halftone Pattern  
(Size: 4, Contrast:0, Pattern Type: line)

6. Go to Layer Palette. Create New Layer.

7. Select > Load Selection (Alpha 1)

8. Fill the selection with white color using Alt + Del.



9. Or you can fill the Black color instead of White to get the effect of shadow of window on the face.

